

National Infrastructure Planning
Temple Quay House
2 The Square
BRISTOL
BS1 6PN

HASKONINGDHV UK LTD.

Mar borough House
Mar borough Crescent
Newcastle upon Tyne
NE1 4EE
United Kingdom

+44 191 2111300 **T**
+44 1733 262243 **F**
info@uk.rhdhv.com **E**
royalhaskoningdhv.com **W**

Date: 12 November 2021
Reference: ExA.PDA-2.V1
Our reference: PB6934-ZZ-XX-CO-Z-0012
Classification: Project related
Enclosures: EN010095

Contact name: Paul Salmon
Telephone: [REDACTED]
Email: [REDACTED]

Alternative Use Boston Projects Limited (the Applicant) - Applicant's proposed Updated Accompanied Site Inspection (ASI) Itinerary

Dear Sir/Madam,

Following issue of the Applicant's draft ASI itinerary (PDA-001) at Procedural Deadline A, the Examining Authority (ExA) issued a final itinerary on 26th October 2021. The Applicant has reviewed this itinerary and has suggested a revised itinerary as set out in **Table 1** and shown in **Figure 1**. The reasons for changing the ExA's final itinerary are due to:

- Temporary closure of Bost/14/2;
- Inability to access specific footpaths including: Bost/14/10 (which doesn't exist on the ground) and Bost/14/8 (due to lack of access); and
- Inability from a health and safety perspective to walk up the Roman Bank at the intersection between Bost/14/11, Bost/14/10 and Bost/14/9.

Considering the above, the itinerary set out below is an appropriate flow of travel and minimises "doubling-back" in order to make the most of the time available.

The additional points from the ExA's itinerary compared to the Applicant's draft itinerary have been maintained including:

- Viewing the wharf area at low tide; and
- The additional viewpoints of Metsa Wood and Golf Yard.

12 November 2021

PB6934-ZZ-XX-CO-Z-0012 1/8

HaskoningDHV UK Ltd. is part of Royal HaskoningDHV. Registered in England: 01336844.
Registered office: Westpoint, Peterborough Business Park, Lynch Wood, Peterborough, PE2 6FZ.
VAT registration number: 792428892

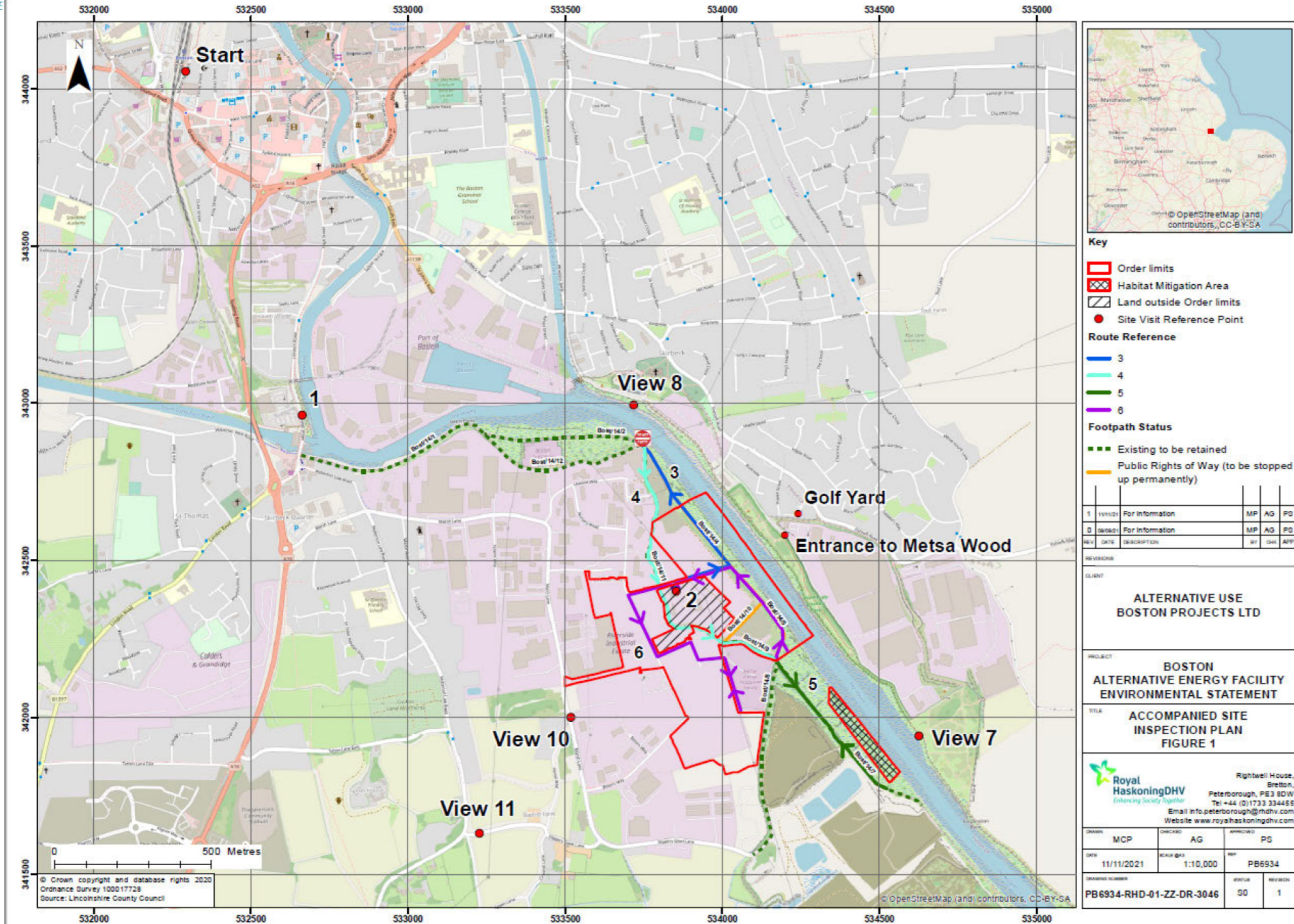
Table 1 The Applicant's Proposed Itinerary

| Point of interest | Location | Description | Estimated time |
|-------------------|-----------------------------------------------------------------------------------------------|----------------------------------------------------------------------------------------------------------------------------------------------------------------------------------------------------------------------------------|----------------|
| Start | Station Approach Car Park (PE21 8RN) | Meeting point for onward travel. A compulsory site briefing from the Applicant (including health & safety and welfare information) will take place. | 09:45 |
| 1 | Fishing Quay on London Road, PE21 8AF | View Boston and Fosdyke Fishing Society Fishing Quay. Proposed wharf to view navigation issues/impact on commercial fishing interests. | 09:55 - 10:10 |
| 11 | Travel to View 11 (viewpoint of significant effect) | View 11 Slippery Gowt Lane alongside properties off Wyberton Low Road (near Sustrans Route 1 / North Sea Cycle Route) – grid reference E533230, N341638 | 10:10 - 10:25 |
| 10 | Travel to View 10 (viewpoint of significant effect) | View 10 Marsh Lane near property Cremorne and opposite property Coronation Villa – grid reference E533523, N341992 | 10:25 - 10:40 |
| 2 | Travel to the Riverside Industrial Estate PE21 7TN Site Office. Vehicles will be parked here. | | 10:40 – 10:50 |
| 3 | Proposed wharf | Walk to Bost/14/4 and view wharf area. Continue along to start of Bost/14/2 (at intersection with Bost/14/4 and Bost/14/11) to view the vessel turning circle (Bost/14/2 is temporarily closed due to Environment Agency works). | 10:50 – 11:10 |
| 4 | Public rights of way to be permanently or temporarily stopped up | View PRoW intersection of Bost/14/4 and Bost/14/11 where: <ul style="list-style-type: none"> • During enabling works, construction of the footbridge, Bost/14/11 will be closed and diverted to Bost/14/4 | 11:10 – 11:40 |

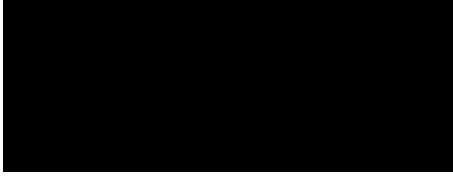
| Point of interest | Location | Description | Estimated time |
|-------------------|---------------------------------------------------------------------|----------------------------------------------------------------------------------------------------------------------------------------------------------------------------------------------------------------------------------------------------------------------------------------------------------------------------------------------------------------------------------------------------------------------------------------------------------------------------------------------------------------------------------------------------------------------------------------------------------------------------------------|----------------|
| | | <ul style="list-style-type: none"> During construction and operation where Bost/14/4 will be closed and diverted to Bost/14/11. <p>Walk south down Bost/14/11 to intersection with Bost/14/10,</p> <ul style="list-style-type: none"> During construction and operation Bost/14/10 will be closed. <p>Continue down Bost/14/9 to intersection with Bost/14/5 where:</p> <ul style="list-style-type: none"> During construction of the footbridge Bost/14/9 will be closed and diverted to Bost/14/5; and During operation Bost/14/5 will be closed and diverted along Bost/14/9. | |
| 5 | Habitat Mitigation Area | Continue South along Bost/14/7 and view the Habitat Mitigation Area. Return North along Bost/14/7 to intersection with Bost/14/5 and Bost/14/9. | 11:40 – 12:00 |
| 6 | Main works areas Lightweight Aggregate and southern end of wharf | <p>Walk from point 5 to point 2</p> <p>Continue North along Bost/14/5 to view location of Lightweight Aggregate Plant (on left) and southern end of wharf area (to view wharf area at low tide (12:17)).</p> <p>Continue north to intersection with Bost/14/4, walk down to point 2.</p> <p>Pick up vehicles.</p> | 12:00 – 12:20 |
| 6 | Main works areas cont'd | <p>Drive south down Nursery Road to view area of construction laydown, parking, and operational parking.</p> <p>Exit vehicles</p> | 12:20 – 13:00 |

| Point of interest | Location | Description | Estimated time |
|-------------------|-------------------------------------------------------------------------------------------------------|----------------------------------------------------------------------------------------------------------------------------------------------------------------------------------------------------------------------------------------------------------------------------------------------------------------------------------|----------------|
| | | <p>Walk down Callen Road and view main site area.</p> <p>Walk down Callen Road to intersection and view area of (construction phase) concrete batching plant.</p> <p>Walk south alongside Biomass No. 3 to view the site lagoon and view across main site.</p> <p>Return to vehicles retracing steps.</p> | |
| Lunch | Travel to Costa Coffee for lunch and comfort break at PE21 7HP. | | 13:00 - 13:30 |
| | Travel to parking for view points. | Parking near the Entrance to Metsa Wood | Arrive 13:45 |
| 7 | <p>Travel to:</p> <p>Metsa Wood; Golf Yard; and View 7 (viewpoint of significant effect).</p> | <p>Viewpoints of significant effect:</p> <p>View tree screening and closeness of properties near the entrance to Metsa Wood (PE21 0BJ);</p> <p>View the conifers screening behind the Golf Yard, Fishtoft Road (PE21 0DP).</p> <p>View 7 Looking north on the north bank of The Haven – grid reference E534628, N341961.</p> | 13:45 – 14:30 |

| Point of interest | Location | Description | Estimated time |
|-------------------|------------------------------------|------------------------------------------------------------------------------------------------------------------------------------------------------------------------------------------------------|----------------|
| | Travel to parking for view point 8 | Parking at the bottom turning area of Windsor Bank. Walk up bank to View 8 | Arrive 14:35 |
| 8 | Visual effects View 8 | View 8: Looking south from Footpath Bost/13/3 near St Nicholas's Church, Skirbeck Conservation Area and properties off The Featherworks / Skirbeck Gardens - grid reference E533779, N342990. | 14:35 – 15:00 |
| End | Station Approach Car Park | Finish of ASI | 15:00 – 15:15 |



Yours sincerely,
For and on Behalf of HaskoningDHV UK Ltd



Paul Salmon

Industry & Buildings